

ACRYLIC WEATHERING GOUACHE

TECHNIQUES



AK

ACRYLIC WEATHERING GOUACHE

TECHNIQUES

INTRODUCTION

So far, most scale modeling enthusiasts have relied on oil-based and enamel products for weathering models. Enamels have many advantages for weathering, but acrylic products can offer interesting benefits and finishes. In any case, the combination, balance, and knowledge of the products are key to achieving a realistic result.

The problem with acrylic products for weathering is that they require skill during application, and once dry, they are difficult to remove if you are not satisfied with the result. AK Interactive's line of gouache colors for weathering has found a solution to these problems.

Our specialists at AK Interactive needed quite a few attempts to obtain a formula that we considered easy and effective for modelers to use when weathering their models. We wanted to design a product that had an authentic matte finish and that could be blended with the help of a brush dampened with tap water.

We also considered it important that gouache paints could be easily reactivated as many times as necessary for the modeler to achieve a satisfactory weathering finish. We wanted this product to not only be non-toxic, offering authentic results, but also easy to use.

Gouache paints are an excellent, versatile medium for weathering, suitable for modelers of any skill level and experience. This acrylic paint will often need to be used in conjunction with other weathering products. Enamel-based products can be applied over gouache paints without reactivating them.

AK Interactive's acrylic gouache paints have been specifically designed for weathering effects and are not recommended for base coats. Our two main sets have been selected for weathering military vehicles and bases, such as vignettes and dioramas.



CONCEPT

Gouache is an excellent option for modeling, as it is an opaque paint that can be used to create various effects on models. Gouache offers great coverage and dries quickly, making it ideal for working in layers.

The thick texture of these paints creates a nice matte finish for your dry earth effects. It also allows for buildup and later blending with a brush. In short, it can behave in the same way as some elements of nature, like dirt, moss stains, or rust accumulation.

The idea and purpose of incorporating new products to achieve alternative finishes is to experiment in order to gain greater realism, possibilities, and variations in the results. From this premise, modelers can develop their own techniques and improve those that are currently more popular, obtaining finishes that make our pieces unique.

We cannot stagnate and always paint with the same products if we aim to achieve different results and evolve in our concepts and in our art.



FREQUENTLY ASKED QUESTIONS

Can I paint the base color of a model?

It is not recommended. There are better paints for base coats; lacquers or acrylic paints are perfect for this purpose.

Does gouache interfere with other paints?

The characteristics of gouache make it non-interfering with other paints like lacquers, enamels, or regular acrylic paints for modeling. It can be used as a complementary finish over any of these bases. It is also not aggressive towards decals or the plastic or resin of the model.

Can it be mixed with acrylics?

Since it has the same base as acrylic paints, it is compatible and can be mixed, but mixing two paints with different characteristics will change the properties of the gouache, and the paint will not behave the same way.

Is it possible to apply gouache with an airbrush?

It's important to note that gouache is not designed for use with an airbrush. Although it can be thinned and used with an airbrush, its main properties are better utilized when applied with a brush.

Can I varnish over gouache paint?

You can varnish over gouache paint without any issues, though it's not necessary when creating weathering effects. Whether you want to seal the work done so far or change the matte finish to a more glossy one (for example, to mimic fresh mud), you can apply a coat of varnish.

Can I reactivate a finish?

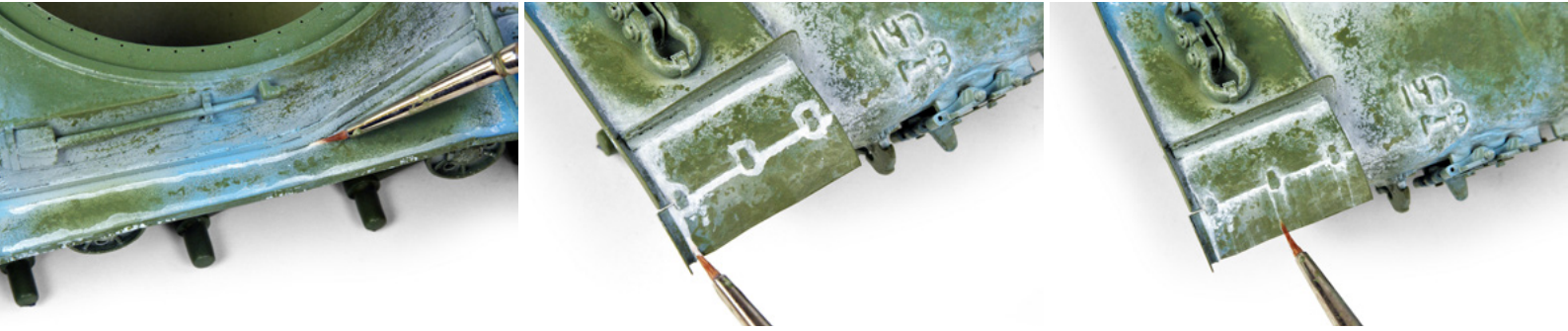
Gouache paint can be reactivated and worked on in layers, which is one of the main qualities of this paint.

Let's continue with some examples that demonstrate the effectiveness and ease of use of AK Interactive's acrylic gouache paints. The first example of applying acrylic gouache will show how the Winter White tone can quickly enhance the appearance of a winter wash. The second example of applying acrylic gouache will demonstrate how to handle earth tones on two different models with light and dark finishes. Next, we will see how rust tones in gouache will easily enhance the appearance of a surface with advanced corrosion.

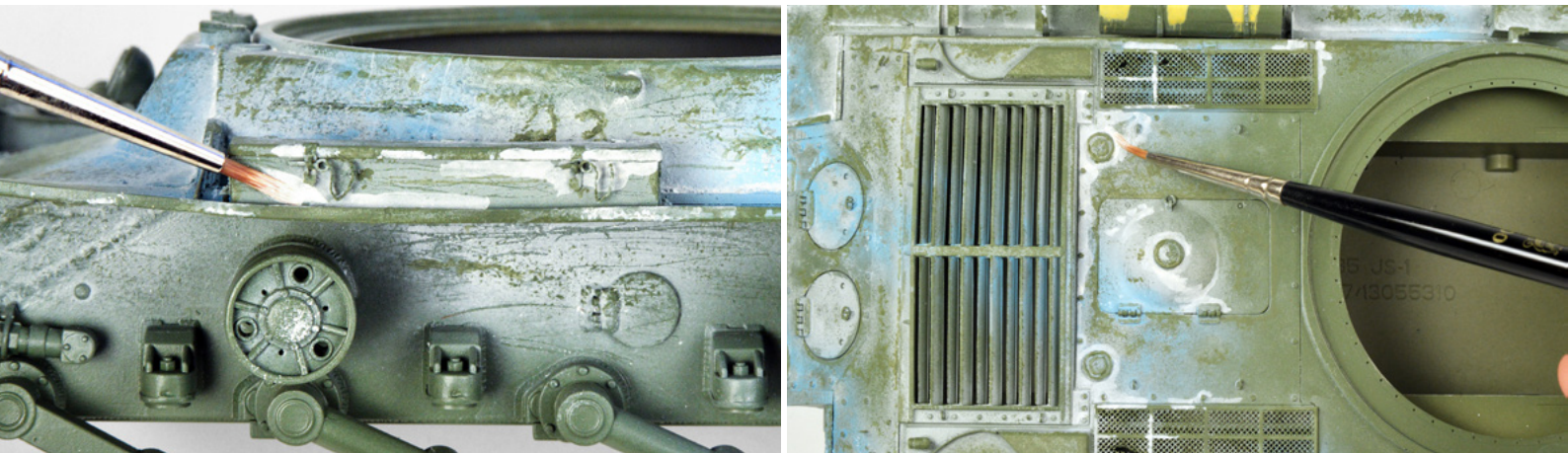
USING THE SNOW WHITE SHADE FROM THE RANGE OF AK ACRYLIC GOUACHE PAINTS

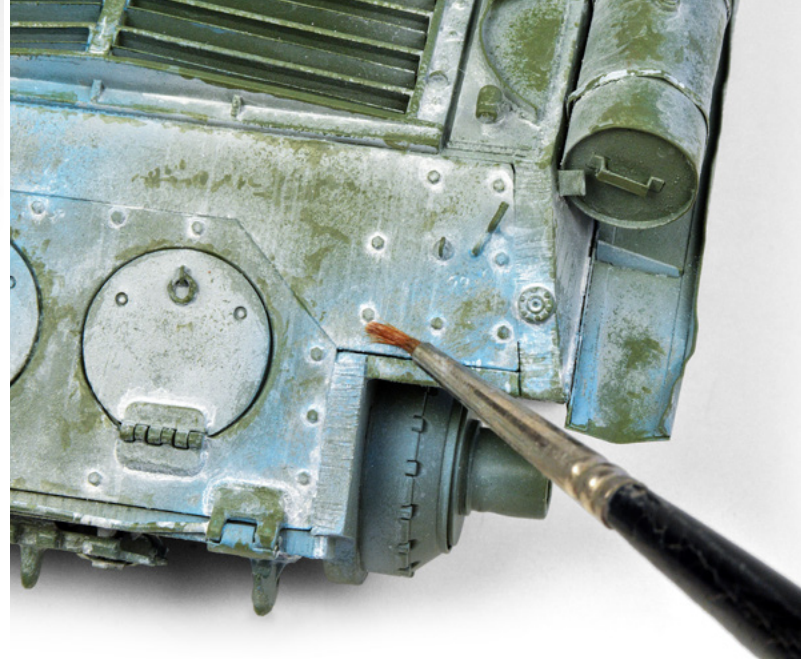
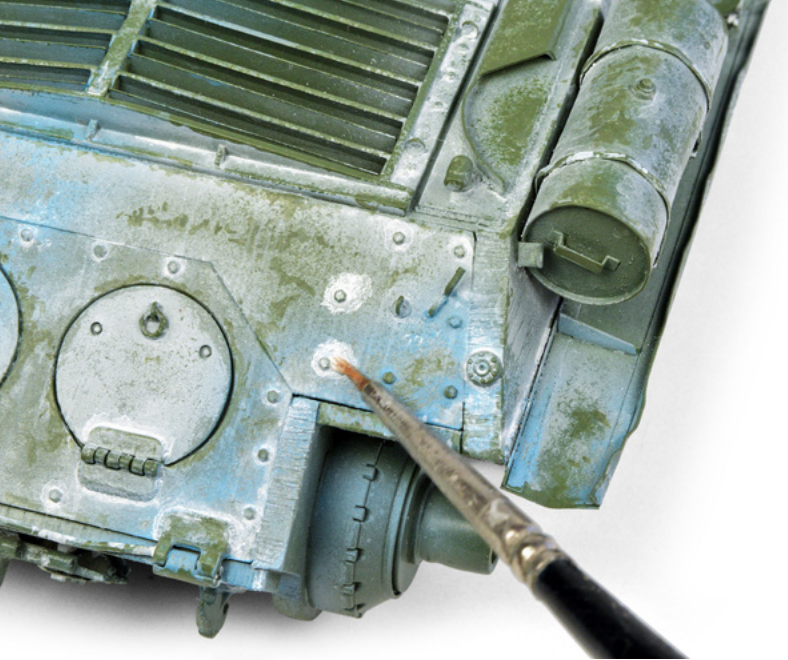
Armored combat vehicles with winter themes have always been popular among modelers. The Snow White tone from AK Interactive's acrylic gouache range works wonderfully to enhance the appearance of a worn white camouflage. The painted JS-152 used in this example already features a worn winter camouflage. This white finish was applied using the popular "hairspray method." Now, we will use the Snow White gouache paint to subtly enhance its finish, adding more weathering effects and white tones.

With a fine brush, we apply Snow White to the corners and recessed areas of the model. We use water to reactivate and blend the paint. This step helps highlight these inner areas and details, adding more tones and depth to the winter camouflage.

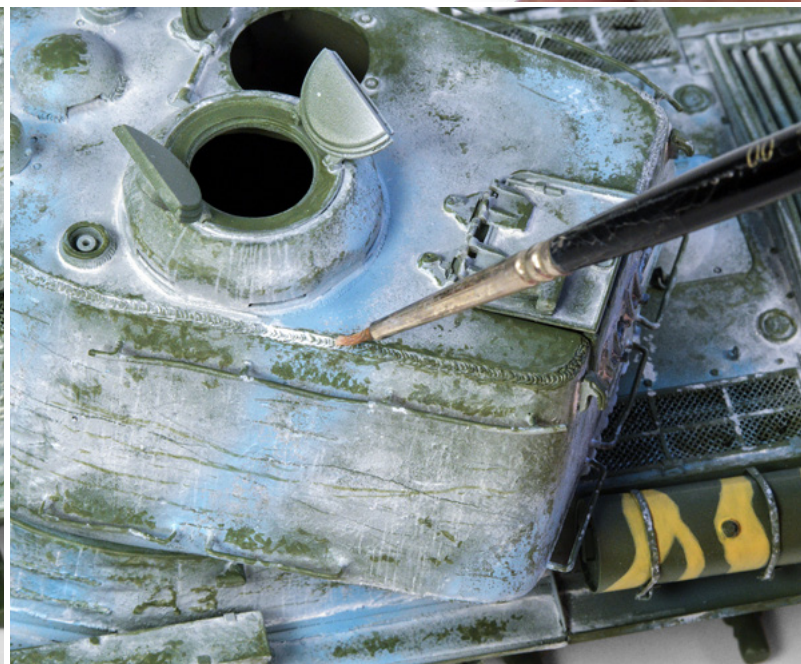


Once we apply and blend the AK gouache paints, they help achieve more tonal variation on the mounted toolbox, the upper rear part of the hull, and the turret.





Diluting AK gouache paints with water allows you to create streaks and drips typical of winter finishes with an authentic look. Diluted gouache paints are also excellent for applying pin washes that help highlight welds and other joints.



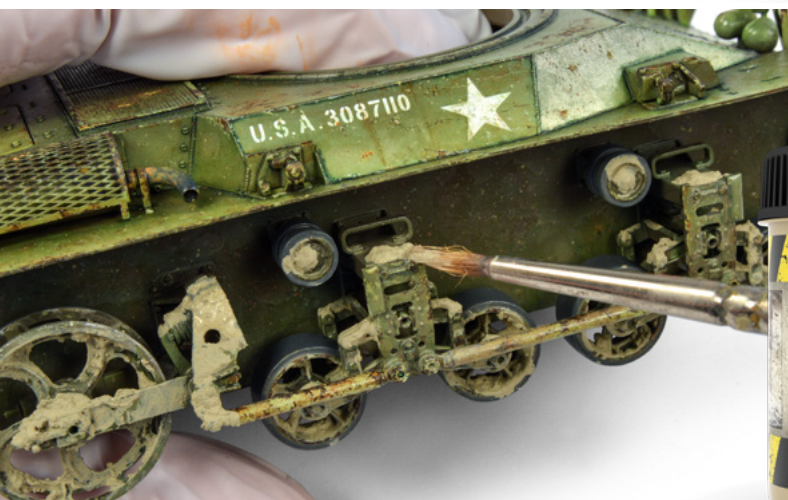
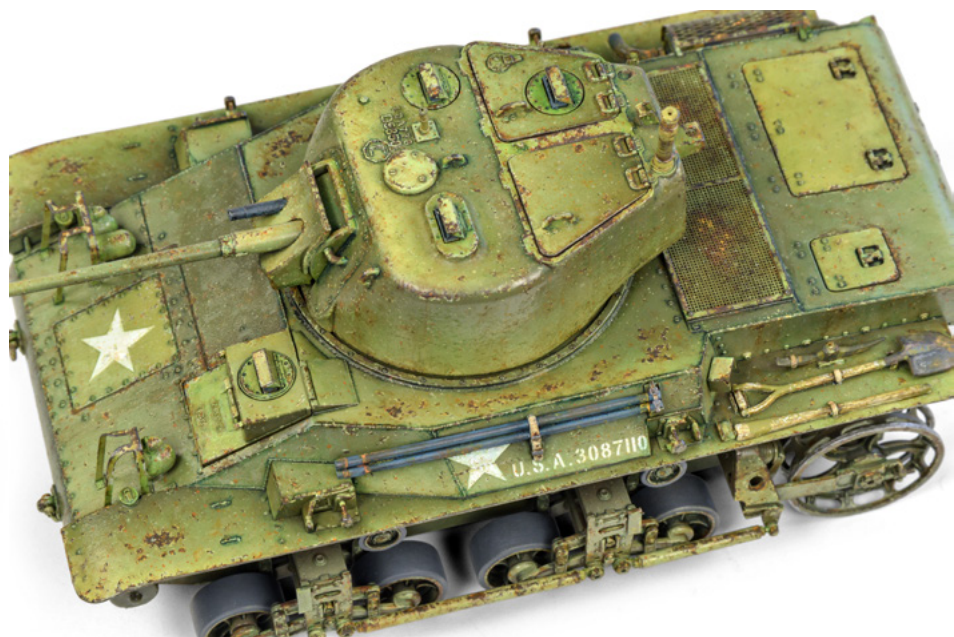
Using AK's Winter White gouache allows you to achieve a worn, diffuse, authentic, and realistic look on your model, while also highlighting certain details. It is recommended to use gouache paints alongside other paints and techniques to achieve alternative, nuanced results. As you can see, the chipped white layers

created with the hairspray method are crucial first steps for this type of finish. Other techniques, like creating additional streaks and pin washes with the Winter White gouache, have also proven essential. These secondary steps add more textures and tones, maximizing the potential of a winter camouflage.

USING THE EARTH TONES FROM THE RANGE OF AK ACRYLIC GOUACHE PAINTS

Let's take a look at how to apply some dust and dirt effects on a 1/35 scale Bronco Models M22 Locust tank. In this example, you can see that the model has already been painted and decals have been applied. Several additional stages have also been

completed, such as washes, chipping effects, and rust tones. All tools, lights, and periscopes are also finished. The model is now ready for the weathering stage.

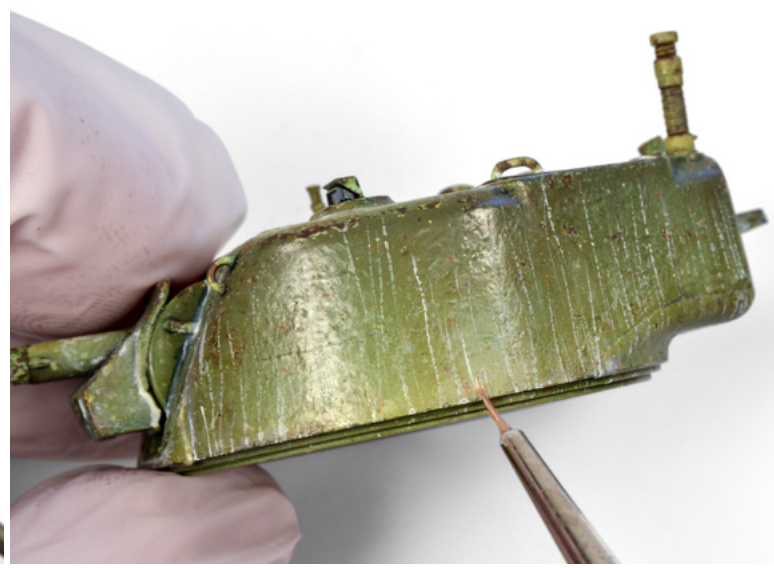


The first step in applying the earth tones in this example was to apply small amounts of thick mud to areas of the M22 where it would naturally accumulate. AK has an acrylic product called Dry Ground that is ideal for this step.

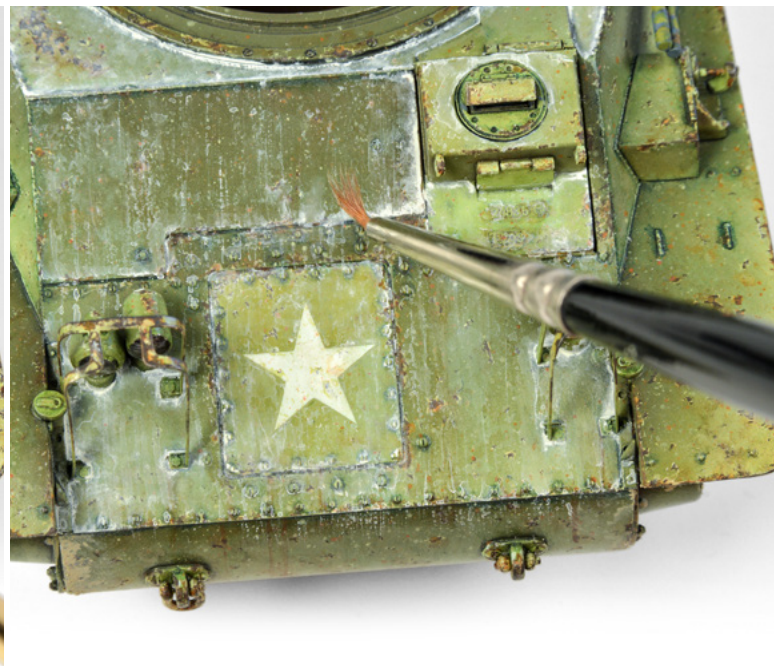
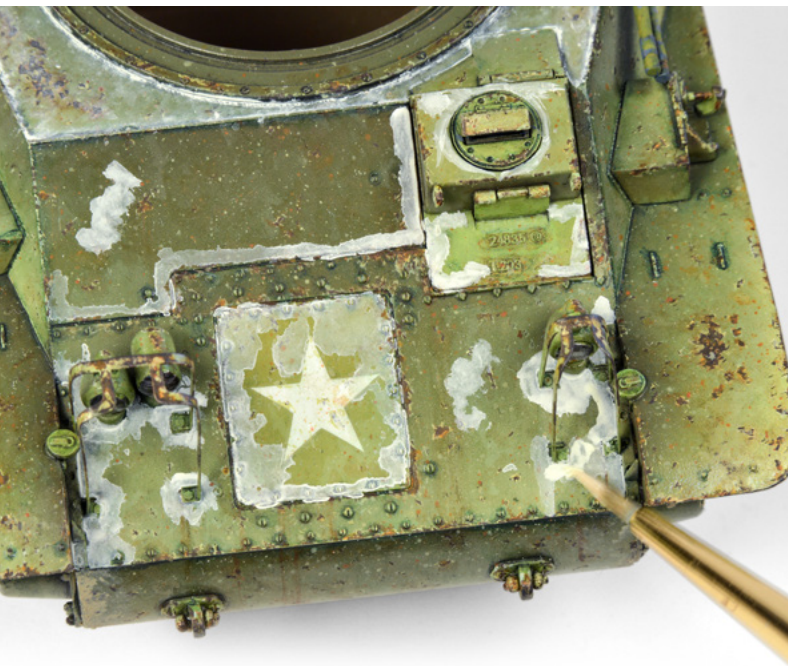


We begin applying the gouache products with the lightest dust tone. Using a fine brush, we paint this color around the details where dust would naturally accumulate. Then, we clean the brush with tap water and remove the excess on a paper towel. With the damp brush, we blend the patches of dust-colored gouache paint. The result is a light, authentic, matte layer of dust.

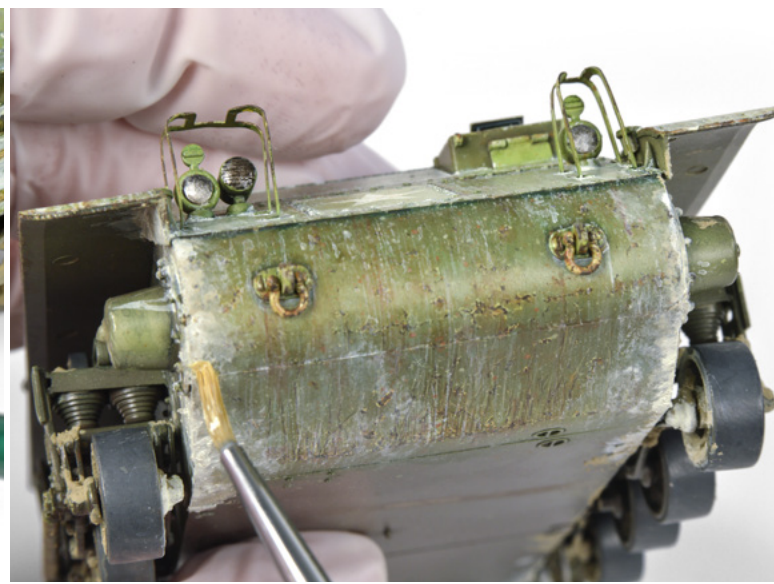
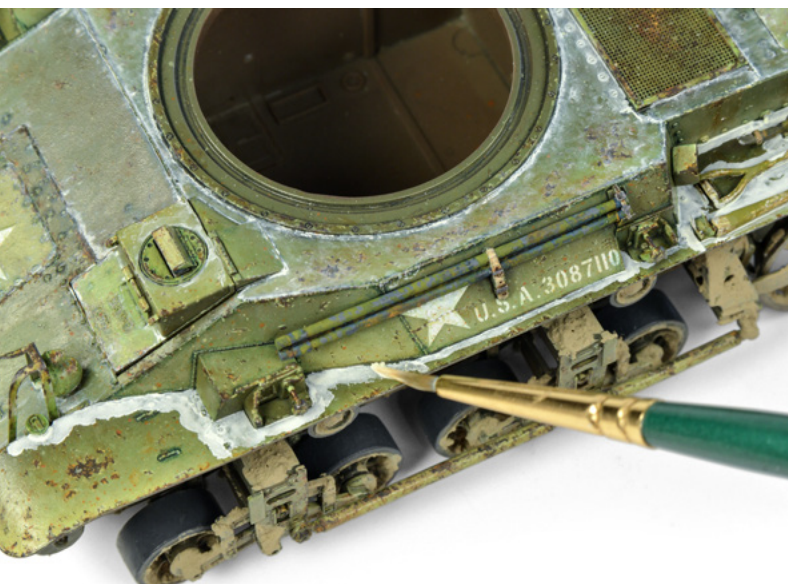




We also apply random dust patches on the sides of the turret and blend them. We can dilute the gouache paints with water and apply fine rain streaks. We soften the rain streaks where needed using a clean, fine brush dampened with water.



These photos show an example of how to add dust effects and rain streaks to the front of the hull. After blending the Dust gouache paint, the rain streaks were applied. If the effects turn out a bit too extreme, as in this example, they can be softened with vertical strokes using a brush dampened with tap water. A dabbing motion with a larger, damp round brush will also help further reduce the rain streaks.



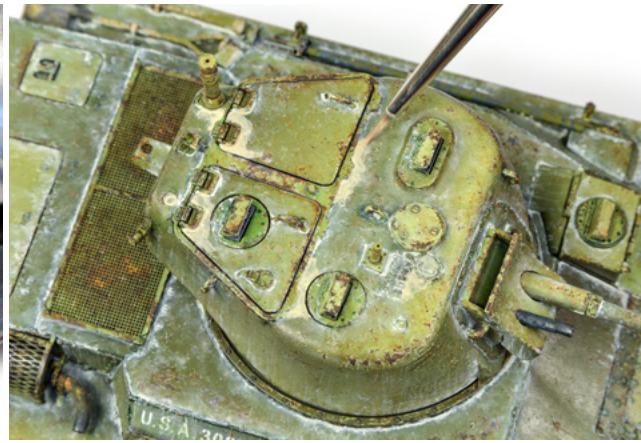
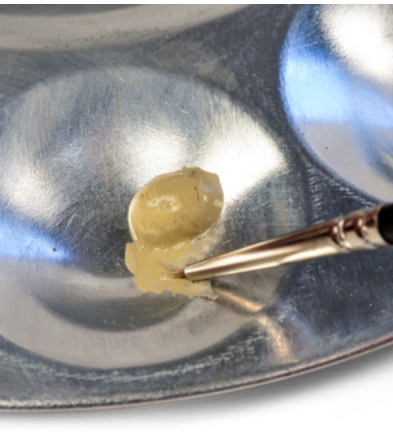
These photos show the application of dust tones on the upper fenders as well as the lower hull. It's advisable to be restrained when applying these effects. It is easier to add more paint if necessary than to remove it.

We apply the dust tones and blend them on the lower hull. We also use the spattering technique to create dust effects on these parts of the model. It may be necessary to dilute the gouache paint with water slightly before performing this step.

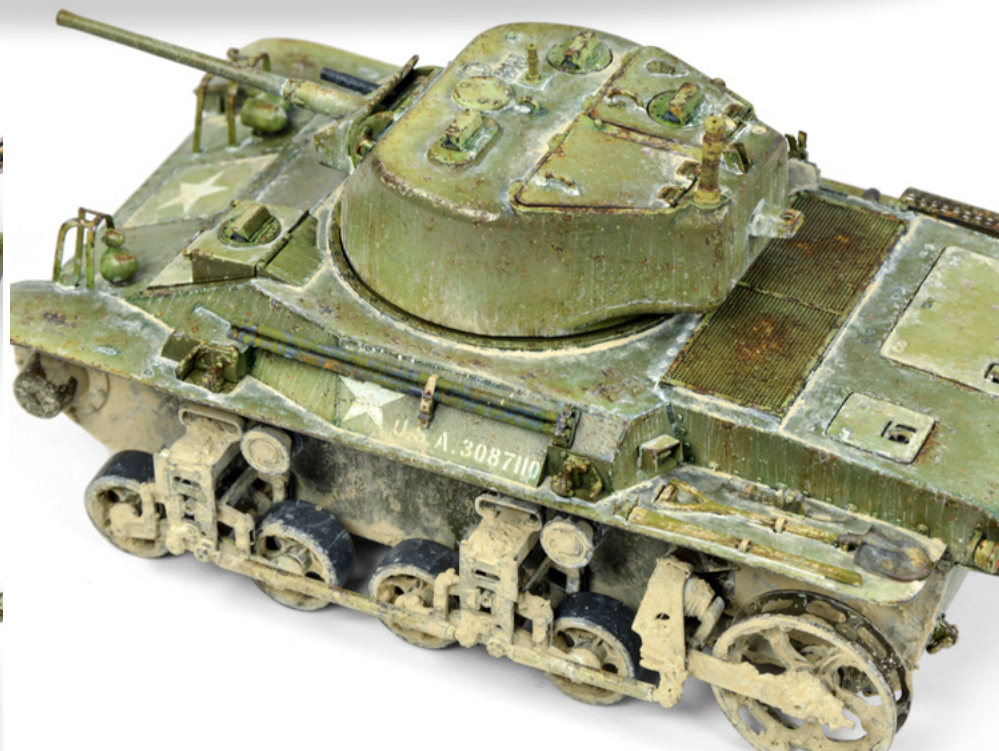
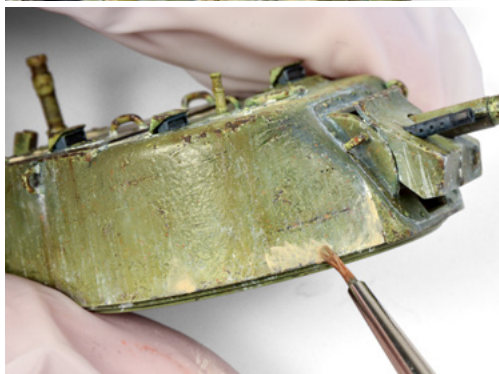
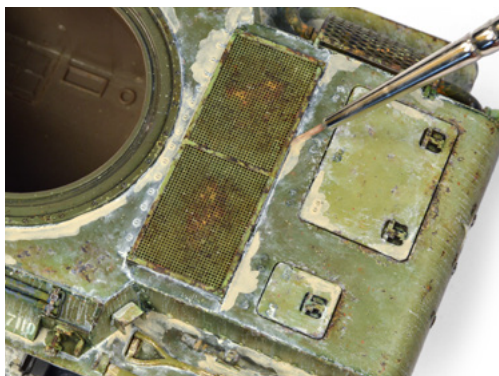


Returning to the upper parts of the model, we apply and blend a bit of Dry Earth gouache to complement the dust tones. Just like with the dust, the dry earth is applied randomly on the

turret and hull, then blended. Larger amounts of Dry Earth gouache are added to the lower parts of the hull, beneath the sprockets.



We can always reactivate gouache paints, so these steps don't need to be completed in a single session.



The M22, with the dry earth tones completed, showcases how the subtle work of these weathering products highlights the details. You can also see how the gouache paints provide an authentic matte finish.

COMBINATION WITH OTHER WEATHERING PRODUCTS

Dark earth tones for creating fresh mud are really important, adding more color and texture to the weathering effects. To create the dark earth tones on this M22, we used an enamel product called ****Dark Mud****. We simply applied the Dark Mud directly from the jar and blended it lightly (but not completely) using enamel thinner. The enamel thinner will not reactivate the gouache paints. We will focus this effect only on the lower hull and running gear.

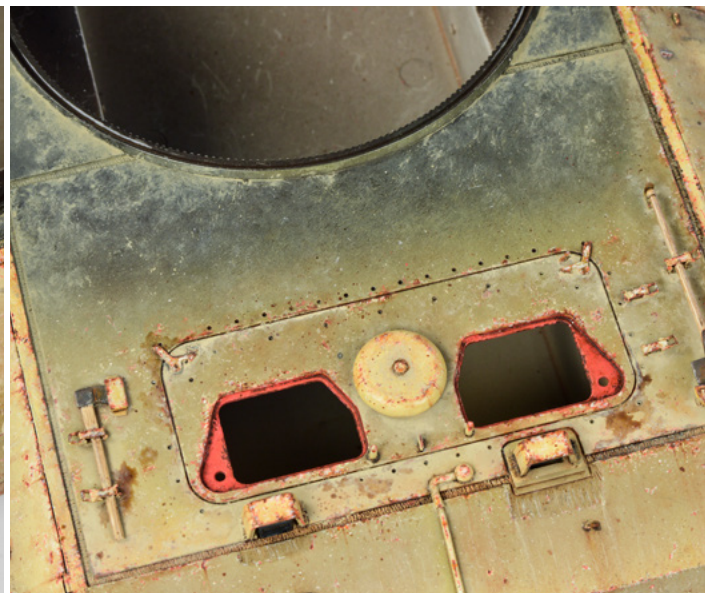
Before adding the dark earth tones to the upper hull, we will further enhance some of the dry earth effects using pigments. Enamel thinner has been used to blend the pigments downward, giving them the appearance of having been washed down by rain.



We apply a bit of gloss varnish over the Dark Mud effects. The shine gives the Dark Mud areas a fresh, wet appearance, while contrasting with the matte earth tones. We also perform a spattering technique to naturally and realistically complement the wet effects.

In this other model, we will see how to create dry earth effects on the upper hull of this E-100. Once again, we use Dry Earth, this time combined with Dark Earth gouache to subtly unify the color modulation.

After mixing the colors with tap water, it was necessary to use a stippling technique with a damp round brush to achieve a natural and blended look in the earth tones.





This is another example of how pigments help blend some of the Dry Earth gouache effects on the hull of the E-100. As in the previous example, enamel thinner was used to further blend the pigments.

Using the running gear of the E-100 as a model, let's see another example of applying thick mud by using Dry Ground as a base and adding more tones with acrylic gouache paints.



The wheels also receive treatment with gouaches. We carefully apply the Dry Ground earth tones to the recessed areas of the drive gears, idler wheels, and road wheels, where a large amount of mud would naturally accumulate.

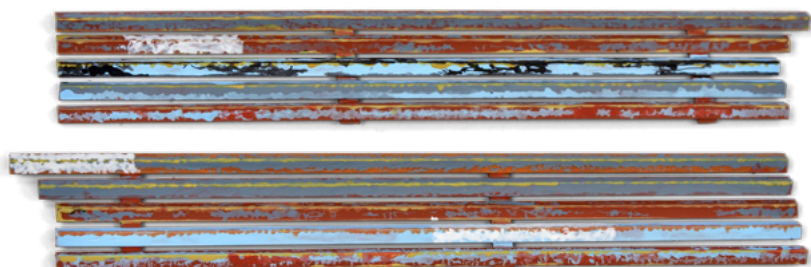
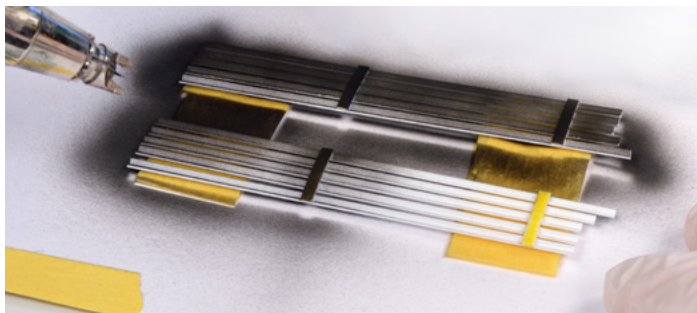


Gouache paints work very well for weathering and distressing a model. You can reactivate them as many times as needed using water until you achieve a result you're satisfied with. The thick texture of these paints creates a matte finish for dry earth effects. Additional effects can also be applied using enamel-based products without reactivating the gouache. If we want greater mud accumulation, we can start by adding some mud to the areas of the model where it would naturally build up, using a product like AK Interactive's Dry Ground. These paints are easy to work with, non-toxic, and you'll enjoy using them.

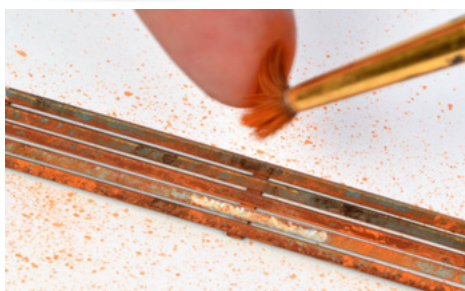
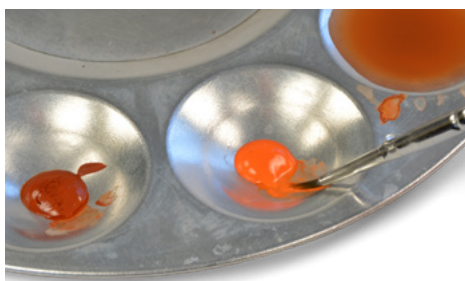
USING THE RUST TONES FROM THE RANGE OF AK ACRYLIC GOUACHE PAINTS

The AK Interactive acrylic gouache range includes three rust tones: Fresh Rust, Medium Rust, and Old Rust. In this example, we'll see how these rust tones can be used and combined to easily enhance the authenticity of a rusted surface. Let's continue with the side armor assembled in the field on the M22 Locust. We will start these details with the application of 3GEN acrylic paints.

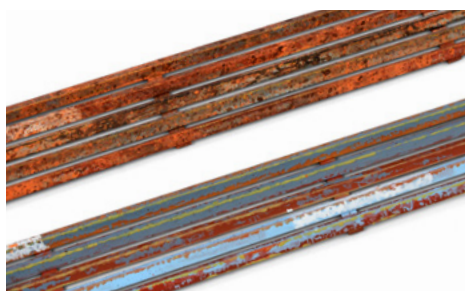
We wanted the side armor built by the crew to have a very matte and rusted appearance with a crusty texture. After masking and painting the rear of these details in black, we flipped them over and painted the front parts with a medium rust tone mixed from Real Color paints. We blended in some more gray and orange tones using acrylics. These colors were applied with a brush at different angles, adding more steel and rust nuances.

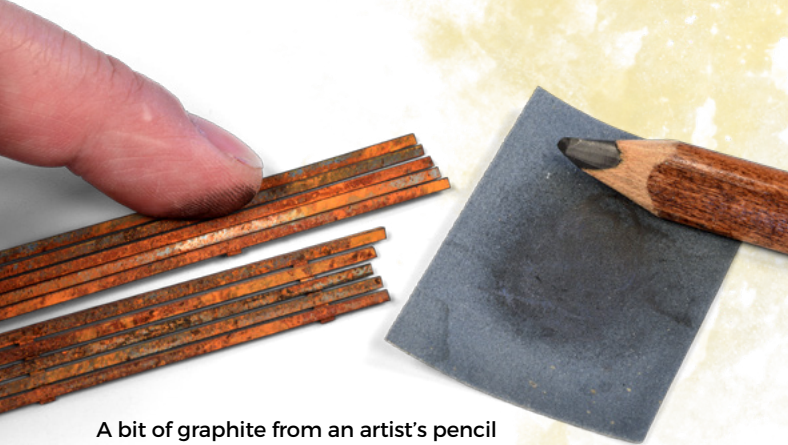


For the next step, we used Old Rust, Medium Rust, and Fresh Rust gouache paints. We started by painting Old and Medium Rust in different sections of the angular iron bars and blended them with water. The gouache paints can also be thinned with water and applied as a wash. The rust tones were applied using the spattering technique.



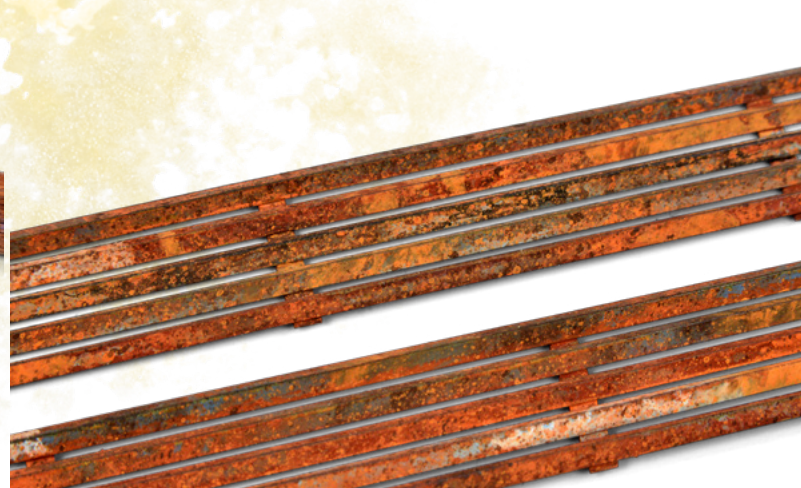
Fresh Rust was applied and blended in some areas to add more tones. When comparing the side armor with the gouache rust tones to the one with just the base paints (last photo on the page), you can clearly see the authentic finish that these acrylics provide.





A bit of graphite from an artist's pencil was rubbed on to add a subtle metallic sheen to these metal details.

We didn't use the same gouache dust tones that we applied for the weathering on the hull over this field-fabricated side armor. Wet gouache dust tones would have reactivated the rust colors, resulting in an undesired tone. Instead, we used another earth tone enamel from AK called Dust Effects to weather these rusted details. The enamel thinner will not reactivate the gouache paints.



We also carefully applied some Dark Mud mixed with gloss varnish to the front and rear areas of the armor after it was attached to the M22. The most important thing is for the modeler to internalize and understand how different products can be used and combined to achieve various effects, even if this requires practice and, at times, learning from mistakes.



The use of AK's gouache rust colors helps enhance a rusted surface with multiple tones, adding more nuances of corrosion while blending with the acrylic base colors. As with other finishing techniques, gouache paints are almost always used in conjunction with other paints and effects.

The gouache colors provided a great matte rust finish to the iron armor plates. Unlike the rest of the M22, it was necessary to use enamel-based earth tones to weather these rusted details. The enamel earth tones ensured that the gouache acrylics didn't reactivate, preserving the finish and adding to the realism of these crucial details.



RANGE

DEVELOPED BY ADAM WILDER



AKG01
SNOW WHITE



AKG02
BLACK



AKG03
SAND



AKG04
EARTH (DRY)



AKG05
DARK EARTH



AKG06
DRY MUD



AKG07
DUST



AKG08
MOSS GREEN



AKG09
FRESH RUST



AKG10
OLD RUST



AKG11
MEDIUM RUST



AKG12
GRIME

SETS

DEVELOPED BY ADAM WILDER

AKG25 WEATHERING EFFECTS

AKG01
SNOW WHITE

AKG02
BLACK

AKG09
FRESH RUST

AKG10
OLD RUST

AKG11
MEDIUM RUST

AKG12
GRIME



AKG26 NATURE WEATHERING EFFECTS

AKG03
SAND

AKG04
EARTH (DRY)

AKG05
DARK EARTH

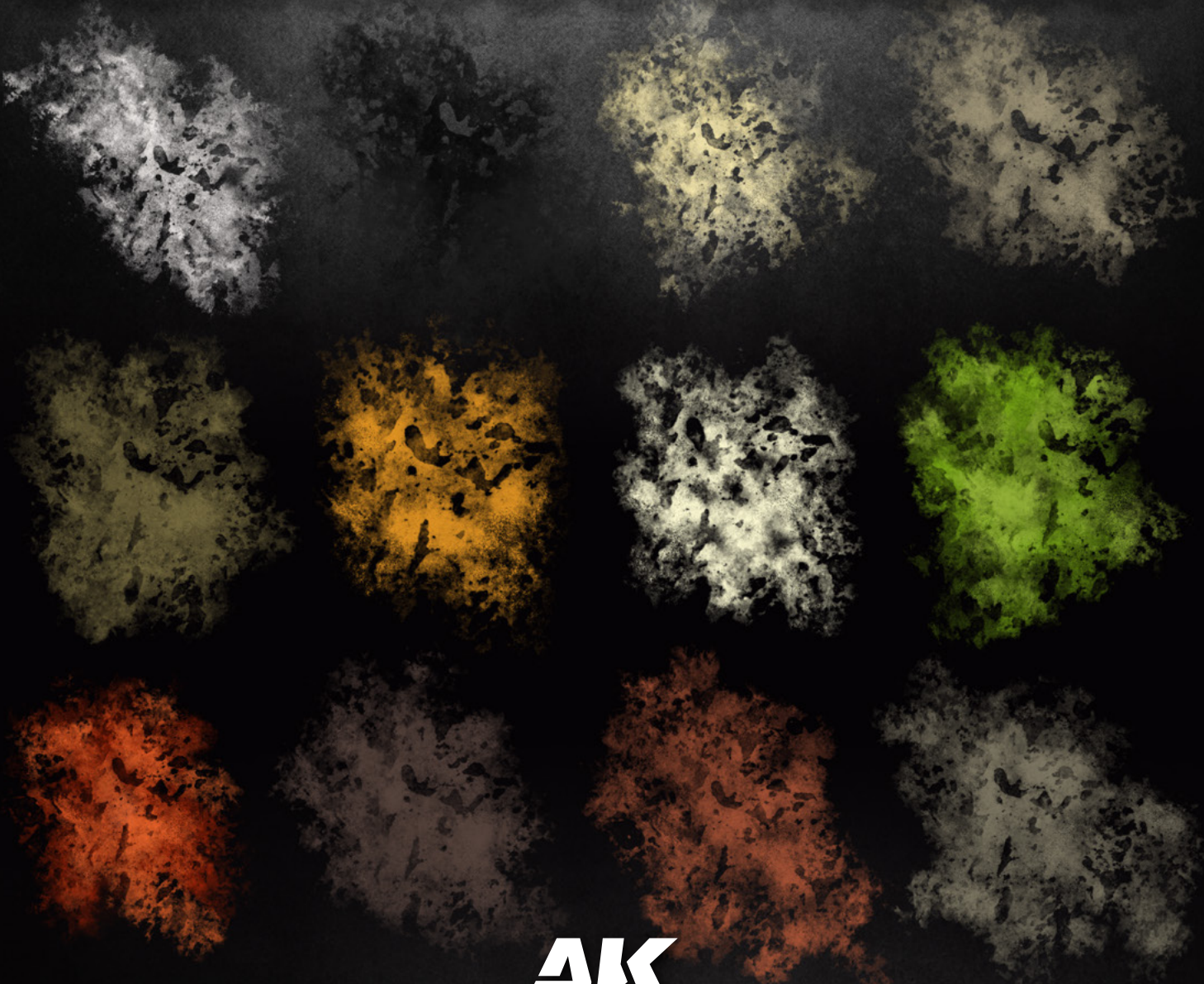
AKG06
DRY MUD

AKG07
DUST

AKG08
MOSS GREEN



ACRYLIC WEATHERING GOUACHE



AK

www.ak-interactive.com

