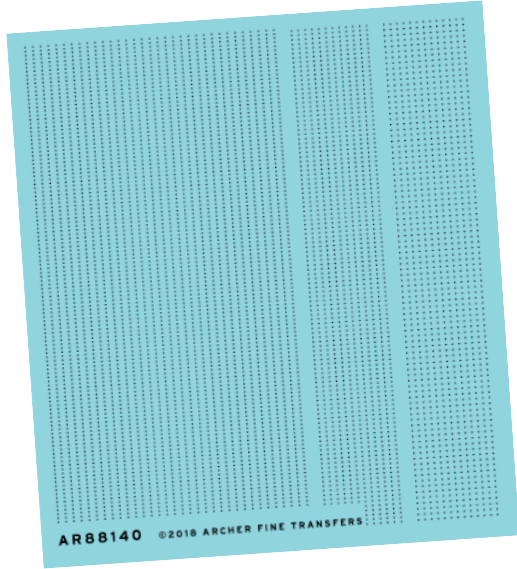


# STEP BY STEP TO RIVET IN POSITIVE USING ARCHER TRANSFERS



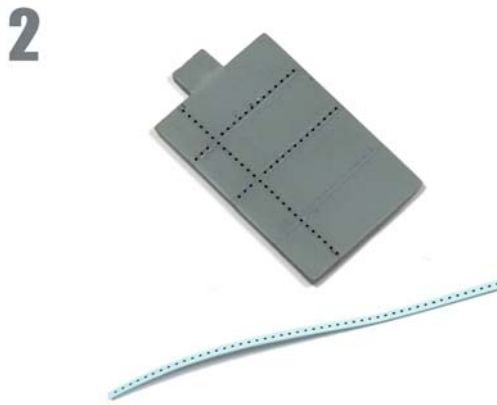
## PASO A PASO PARA REMACHAR EN POSITIVO USANDO ARCHER TRANSFERS



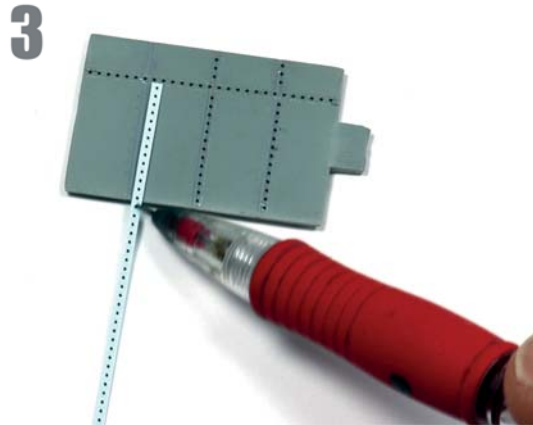
AR88140



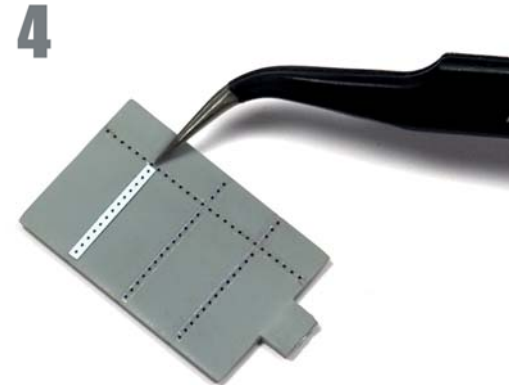
The material we will need to apply the rivets is: a little container with water, tweezers and a cutter.  
 El material necesario para la aplicación de los remaches es un pequeño recipiente con agua, unas pinzas y un cutter.



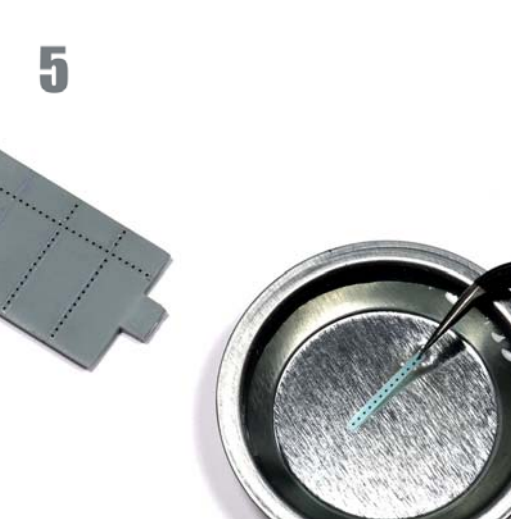
We cut a complete stripe of the suitable diameter for the model we will work on.  
 Cortamos una tira completa del diámetro adecuado a la escala del modelo que vayamos a hacer.



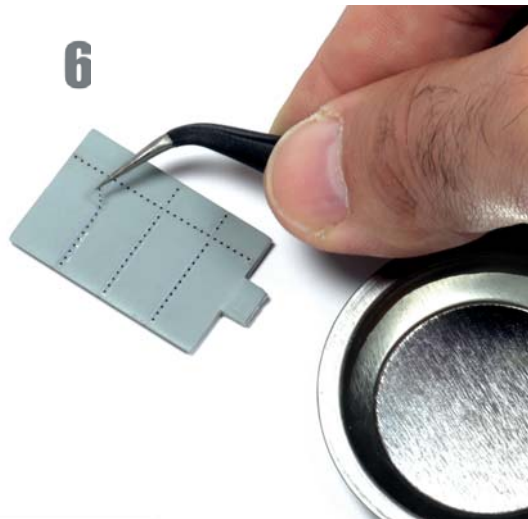
We mark the needed length with a pencil.  
 Con un lápiz marcamos la longitud que necesitamos.



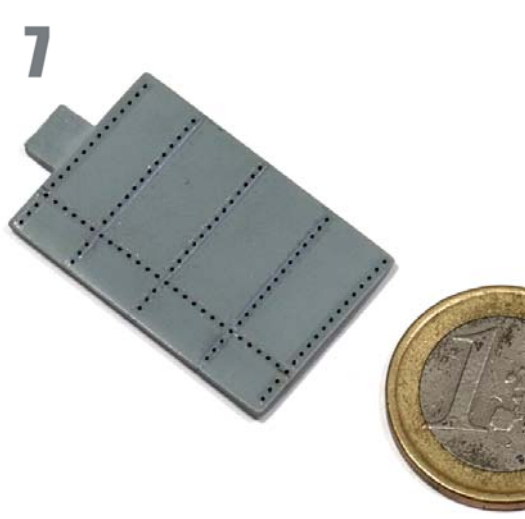
We check that the length is correct since sometimes it is convenient to cut one or two rivets.  
 Comprobamos que la longitud es la correcta, ya que alguna vez es conveniente recortar uno o dos remaches.



We immerse the stripe in water for a second. The decal comes off almost instantly.  
 Sumergimos el tramo de remaches en el agua apenas un segundo. La calca se desprende casi al instante.



We place the trimmed section on the working area of the model surface.  
 Colocamos el tramo recortado en el área de trabajo de la superficie del modelo.



Finished and riveted piece.  
 Pieza terminada y remachada.